



Presentation of ANSES - French strategic policy for risk assessment in food safety

**French Agency for Food, Environmental and
Occupational Health & Safety**

Roma, Ministero della salute, 10th December 2018

ANSES in brief

- ✓ **About 1350 staff**
- ✓ **Around 800 external experts** solicited
- ✓ Annual budget: **132 million Euros**
- ✓ **More than 13800 Opinions** issued since 1999
(AFSSA + AFSSET)
- ✓ **9 laboratories** in 16 locations
- ✓ **65 National Reference Laboratory** mandates,
8 EU-RL mandates, **19 international** mandates
- ✓ **6 million Euros** per year to support calls for research projects

Creation and foundations: scope

ANSES is accountable to five ministries
(objectives and performance contract)



&



Parliament
&
National
plans



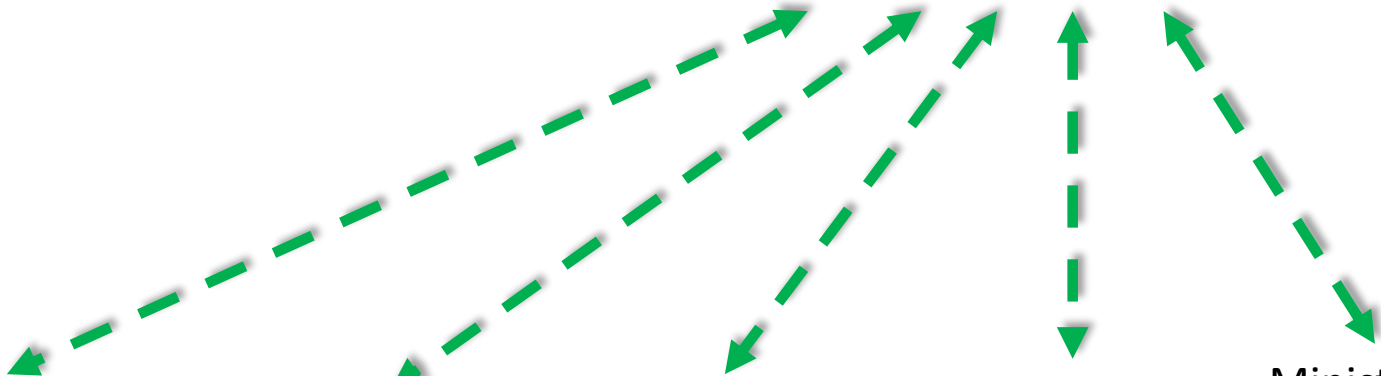
Ministry of
**Ecology &
sustainable
development**

Ministry of
Labour

Ministry of
Health

Ministry of
Agriculture

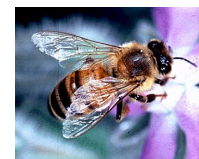
Ministry of
**Consumer
affairs**



Missions

ANSES contributes to ensuring:

- **human health** and **safety** in the fields of **environment, work** and **food**
- as well as
- protecting **animal health** and **welfare**
- protecting **plant health**



Recommend public health measures

Conduct laboratory reference missions

Conduct risk assessment in its fields of competence

Conduct surveillance, monitoring, alert and vigilance missions

Conduct, coordinate and initiate research projects



Provide training and information and contribute to public debate

Issues marketing authorisations of veterinary medicinal products

Issues marketing authorisations of plant protection products, fertilisers, growing media, and adjuvants

Issues marketing authorisations of biocides

Collaborate with European and international agencies (EFSA, ECHA, EMA, EEA, EU-OSHA, and ECDC)

New ANSES missions

- In 2015, implementation of the **phytopharmacovigilance scheme (PPV)** - monitoring adverse effects of plant protection products
- Since 1 January 2016: coordinating the **toxicovigilance system** - toxicovigilance activities of the network of poison control centers
- Since 1 July 2016: issuing of marketing authorisations for **biocides**
- New mission (as part of the **Tobacco Products Directive 2014/40/EU**)
- Since 1 January 2018, risk assessment and scientific and technical support on **vectors**



Roger GENET
Director General

Head of Cabinet: Alima MARIE
Chief of Staff: Marthe-Louise BOYE

Accounting Agency
Cyril POIGNARD

European and International Affairs Department
Director: Salma ELREEDY

Department of Communication and Institutional Relations
Director: Alima MARIE

9 laboratories, conducting reference & research activities on food safety, animal health & plant health

General Affairs Division

Caroline GARDETTE
Deputy Director General

Health, Safety & Security Unit (HSS)
Emilien BROUSSAL / Sylvie ZINI

Quality & Internal Audit Department (DQAI)
Director: Céline MARCOU-CHERDEL

Support for Strategic Management Unit
C. RIGOULOT / C. CHATEAU

Human Resources Department (DRH)
Director: Isabelle TILLY-BECKER

Legal Affairs Department

Marketing authorisations for veterinary medicinal products; monitoring & control of veterinary drugs; inspection of the entire sector
Marketing authorisations for plant protection products, fertilisers, growing media and biocides

Director: Pierre-Yves LETOURNEL

Regulated Products Division

Françoise WEBER
Managing Director General

SCAF

SSIPR

Regulated Products Assessment Department
Director: Agnès LEFRANC

Market Authorisations Department
Director: Marie-Christine DE GUÉNIN

French Agency for Veterinary Medicinal Products
Director: Jean-Pierre ORAND

Science for Expertise Division

Prof. Gérard LASFARGUES
Managing Director General

Social Sciences, Expertise & Society Unit
Benoit VERGRIETTE

Health Alerts & Vigilance Department
Director: Juliette BLOCH

Research Funding & Scientific Watch Department
Director: Armelle DEGEORGES

Risk Assessment Department
Director: Matthieu SCHULER

Risk assessment through collective expertise involving external experts
Different kinds of groups of experts (includes 18 Expert committees)
Around 350 requests/year
Opinions published on the website

Research & Reference Division

Gilles SALVAT
Managing Director General

Strategy & Programmes Department
Director: Nicolas CANIVET

Fougères Laboratory
Director: Pascal SANDERS

Nancy Laboratory for Hydrology
Director: Jean-François MUNOZ

Lyon Laboratory
Director: Laurent LEMPEREUR

Niort Laboratory
Director: Jaqueline VIALARD

Dozulé Lab. for Equine Diseases
Interim Director: Aymeric HANS

Ploufragan-Plouzané Laboratory
Director: Nicolas ETERRADOSSI

Nancy Lab. for Rabies & Wildlife
Director: Elodie MONCHATRE-LEROY

Maisons-Alfort Lab. for Animal Health (LSAN)
Director: Pascal BOIREAU

Plant Health Laboratory
Director: Philippe REIGNAULT

Lab. for Food Safety (LSAL)
MA/Boulogne
Director: Laurent LALOUX

Sophia Antipolis Laboratory
Director: Richard THIERY

Reference, research and surveillance

9 laboratories on 16 sites

- ✓ Conducting reference and research activities on food safety, animal health, and plant health
- ✓ Contributing to animal health surveillance and expert assessment in food safety, animal health, and plant health
- ✓ Ensuring a territorial presence of the laboratories & their units which allows them to be close to the field (anticipation & detection of emergencies & health problems)
- ✓ Maintaining a position in the main regions of production corresponding to the sectors concerned by the reference activities of the laboratories



Core values

Independence, impartiality

A code of conduct and independent committees which stakeholders can solicit, collegial and multidisciplinary scientific panels, prevention of conflicts of interests, public funding, etc.

Transparency

Assessment process, minority opinions, publication of opinions, public declarations of interest, public calls for experts and research projects, etc.



Access to stakeholders
Charter on the openness of expertise to society, contribution of civil society, dialogue committees, etc.

Excellence/scientific expertise
Selection of experts through open calls for applications

Governance



Stakeholders
and their
expectations



Director General

3 years

Appointment by governmental decree

- Day-to-day operations
- Implements the orientations given by the Board of administration



Ethical
standards

Committee for ethical standards & prevention of conflicts of interest

8 members; 5 years

Appointment by ministerial decree

Lawyers, philosophers, sociologists, ...

Can be petitioned by a member of the Board of administration, the Scientific Board, the Expert committees, by the Director General, or by ANSES employees



Scientific
excellence
and
orientations

Scientific Board

29 scientists; 3 years

Appointment by ministerial decree: 24 members plus

- 3 ANSES staff representatives
- 1 Pres. of the InVS Scientific committee
- 1 Pres. of the ANSM Scientific committee

- Four annual meetings
- Provides scientific orientation & guidance
- Supervises the conditions of independent external expertise:
 - Evaluates applications for the Expert committees and advises on their final membership
 - Reviews public declarations of interest
- Oversees the evaluation of the Agency's research activities

Board of Administration

36 members; 3 years

Appointment by governmental decree

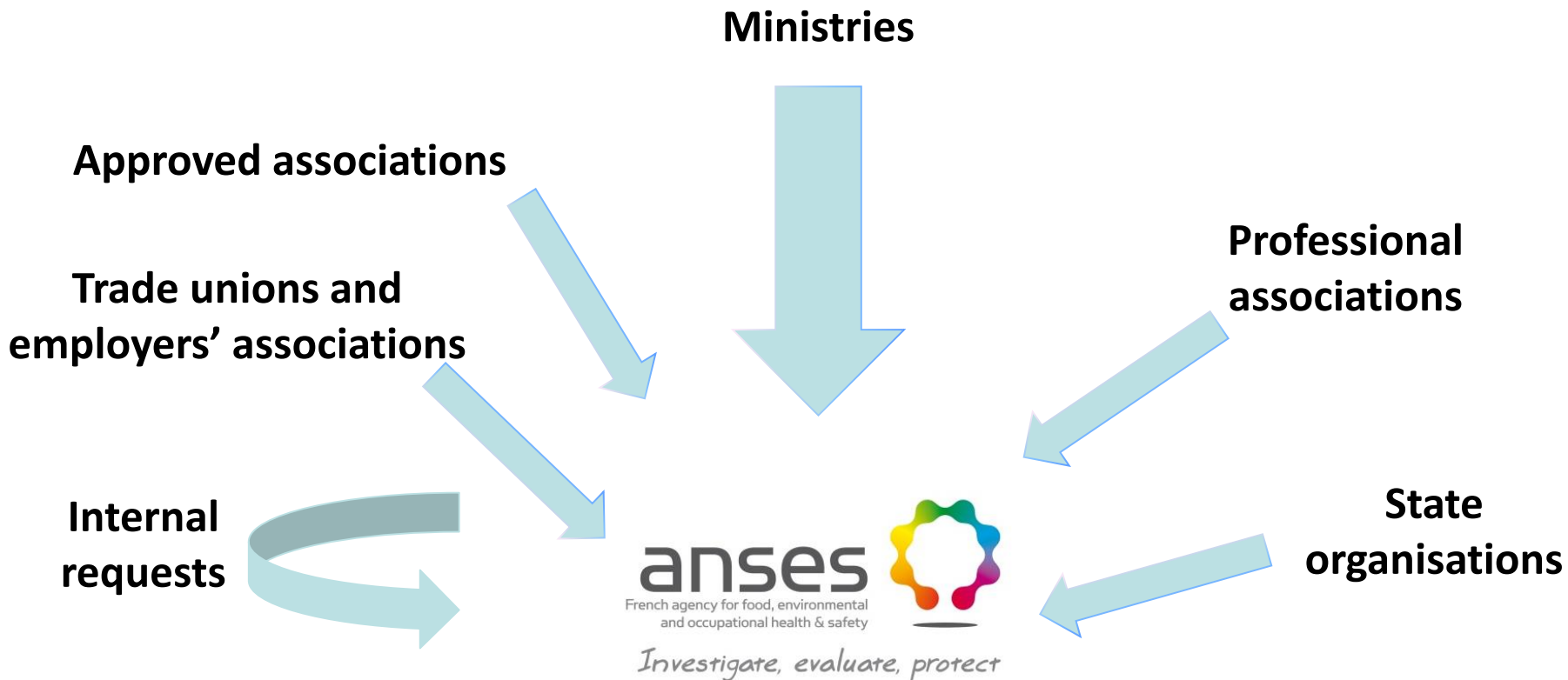
President

Five colleges:

- From public authorities
- From unions and employer organisations
- NGOs
- Professional organisations
- Elected and qualified individuals
- ANSES staff representatives

- Four annual meetings
- Strategic orientations
- Creation of five thematic steering committees (food safety, environmental health, occupational health, animal health & welfare, and plant health)

Who can make requests to ANSES?



Risk assessment through collective expertise

Principles

(laid down in founding texts)

- ❖ “ANSES provides **independent and multidisciplinary scientific expertise**”
- ❖ “ANSES provides **expert assessment** in its fields of competency through its **Expert Committees**”

Objectives

- ❖ Scientific excellence
- ❖ Independent and impartial scientific opinions

Requirements

- ❖ Competence and a multidisciplinary approach
- ❖ Comparing viewpoints, collegial debate
- ❖ Diverging opinions considered
- ❖ Prevention of conflicts of interest
- ❖ Code of conduct for Expert Assessment, NFX 50-110 standard, traceability, transparency

Expert Groups

- ❖ Expert Committees
- ❖ Thematic working Groups
- ❖ Emergency Collective Assessment Groups

16 permanent ANSES Expert Committees (CES) (October 2017)

- ✓ Assessment of risks related to **biocidal** substances and products
- ✓ Assessment of risks related to **chemical** substances within the framework of the implementation of **REACH** and **CLP** regulations
- ✓ **Plant protection products**: chemical substances and preparations
- ✓ **Micro- and macro-organisms** beneficial to plants
- ✓ **Fertilisers** and **growing media**

- ✓ Health reference values
- ✓ Assessment of risks related to **physical agents**, new **technologies** and **development areas**
- ✓ Assessment of risks related to **air environments**
- ✓ Assessment of chemical risks of **consumer items and products**
- ✓ **Water**
- ✓ **Human nutrition**
- ✓ Assessment of **physical and chemical risks in food**
- ✓ **Assessment of biological risks in food**
- ✓ **Feed**
- ✓ **Animal health and welfare**
- ✓ Biological risks for **plant health**

Regulated products

Environmental and occupational risks

Water, food and nutritional risks (human)

Animal health & feed

Plant health

Thematic working groups (and CES it reports to)

- ✓ **Endocrine disruptors**

- ✓ **Tobacco** and vaping products
- ✓ Vigilance on **chemical products**

- ✓ **Avian influenza**
- ✓ **Animal welfare**

- ✓ **Biological indicators of exposure**
- ✓ **Metrology**

- ✓ Assessing the **safety of materials and articles** used in permanent facilities for the production, treatment and distribution of **water intended for human consumption**
- ✓ Assessment of the **health risks related to the chemical parameters** of **water intended for human consumption**

- ✓ **Nutrivigilance**

- ✓ **Biotechnology**

- ✓ Assessment of **guides to good hygiene practice (GGHP)** and of application of **HACCP principles**
- ✓ Assessment of **substances and processes submitted for authorisation in foods**
- ✓ **Analytical methods for food**

- ✓ **Phytopharmacovigilance**

And numerous non-permanent working groups

CES chemical risks of consumer items and products

CES chemicals covered by REACH and CLP Regulations

CES Animal health & welfare

CES health reference values

CES risks related to air environments

CES Water

CES Human nutrition

CES biological risks in food

CES physical & chemical risks in food

Surveillance, alerts, monitoring and vigilance

ANSES is in charge of schemes that produce health alerts:

- **Nutritional vigilance** (health monitoring system for potential adverse effects associated primarily with food supplements or novel foods)
- **Biotox plan** (germs that could be used in the event of biological attacks)
- Pharmacovigilance for **veterinary drugs**
- **Reference laboratory** mandates in food safety and animal health

ANSES coordinates / contributes to activities on health surveillance and alerts that originate outside the agency, for example:

- National Network for Monitoring and Prevention of **Occupational Diseases** (RNV3P)
- National **animal health epidemiological surveillance** platform
- **Toxicovigilance** for regulated products such as plant protection products
- Coordinating the **toxicant monitoring scheme** (toxicovigilance activities of the network of poison control centers) - since January 1st 2016
- “**Phytopharmacovigilance (PPV)**” scheme to monitor potential post-authorisation impacts of plant protection products on human health, animal and plant life, and the environment – since July 1st 2015

ANSES fulfils its mission also by:

- ✓ Setting up **observatories** for products and processes (e.g. Pesticide residues, food quality)
- ✓ Maintaining a watch on **international scientific publications** and on trends in the **media and society**
- ✓ Participating in European and international **alert networks**

Reference, research and surveillance

Anses main missions:

- **Expertise, epidemiosurveillance, alert; scientific and technical support to the ministries**
- Development and validation of **analytical methods**
- Coordination of **laboratory networks** (France & EU MSs): training, interlaboratory proficiency tests etc.
- **Confirmation of results** to competent authorities
- Gives support to the **certification of laboratories**
- Ensures **surveillance and epidemiological modelisation**
- Threatening biological and chemical agents: **knowledge improvement** on their identification, pathogenicity, toxicity, their prevention, their prevalence and their spread

Reference and research

✓ 65 national reference mandates

(Animal & Plant Health / Food safety)



✓ 8 EU and 19 international reference mandates

(OIE, WHO, FAO)



✓ National, EU and international partnerships

✓ EU networks *(MedVetNet / Epizone / CoVetLab ...)*

✓ Projects funded through national and EU sources:

40 on-going EU-funded research projects

(Horizon 2020, COST, EFSA ...)



Risk assessment strategic policy 2019-2021

General context

- New consumption trends
- Fake news
- Great expectations towards safety but also quality and sustainability « States General July 2017 »
- Accessibility and socioeconomical discrepancies
- Symbolic aspects and ethical perspectives

Mitigating hazards to reinforce **food safety**

- Documenting hazards: WGS/ high throughput
- Structuring epidemiology and surveillance: new multistakeholders platform, source-attribution, dataquality
- Documenting exposure and risks: TDS (µbio?), AMR and food
- Ranking hazards and sensitive foods

Monitoring the food offer and nutritional risks for a **healthy food**

- Documenting food composition and food offer (quality): OQALI observatory and CIQUAL tables
- Documenting behaviours and cultural drivers
- Documenting intakes and inadequation: towards dietary recommendations
« Programme national nutrition-santé »

Anticipating **emerging risks and building the future** of RA methodology

- Constantly improving methodologies:

Chemical mixtures, ED, biomonitoring, cinetic models (PBTK), drivers for exposure, multipathogens approach, uncertainties-weight of evidence, specific populations

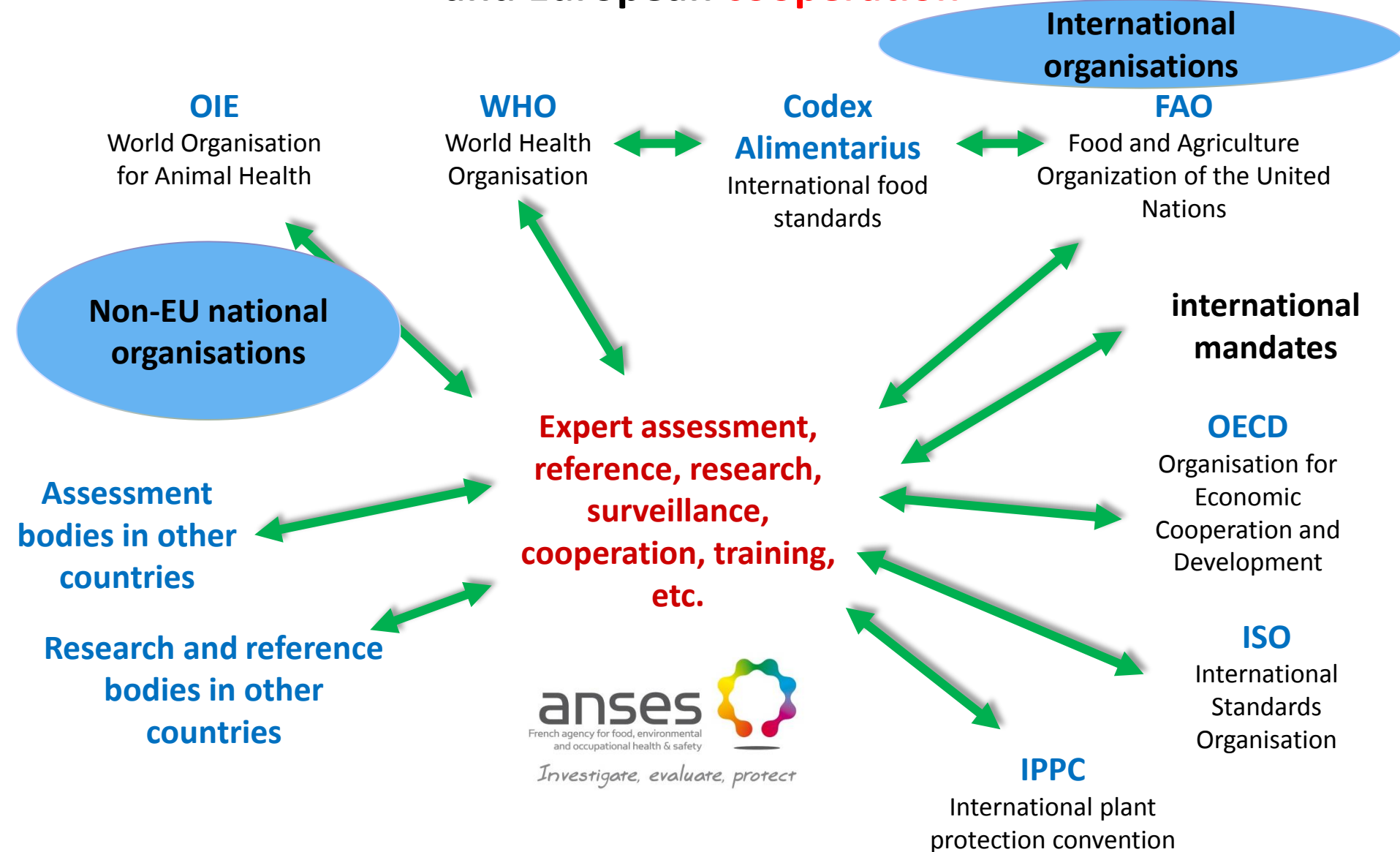
- Identifying and describing new risk factors/
drivers

Overseas territories, new consumers' groups (veggie, « without »...),
New trends (crude, after « best before » dates...), new niches (organic...)

- Vigilances and emerging risks

- Towards integrative approaches: « safety, health, sustainability »

Maintaining strong international and European **cooperation**



ANSES main partners

- International organisations



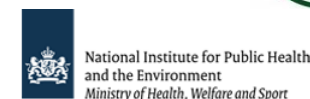
- EU agencies & institutions



- National counterparts - risk assessment / research bodies



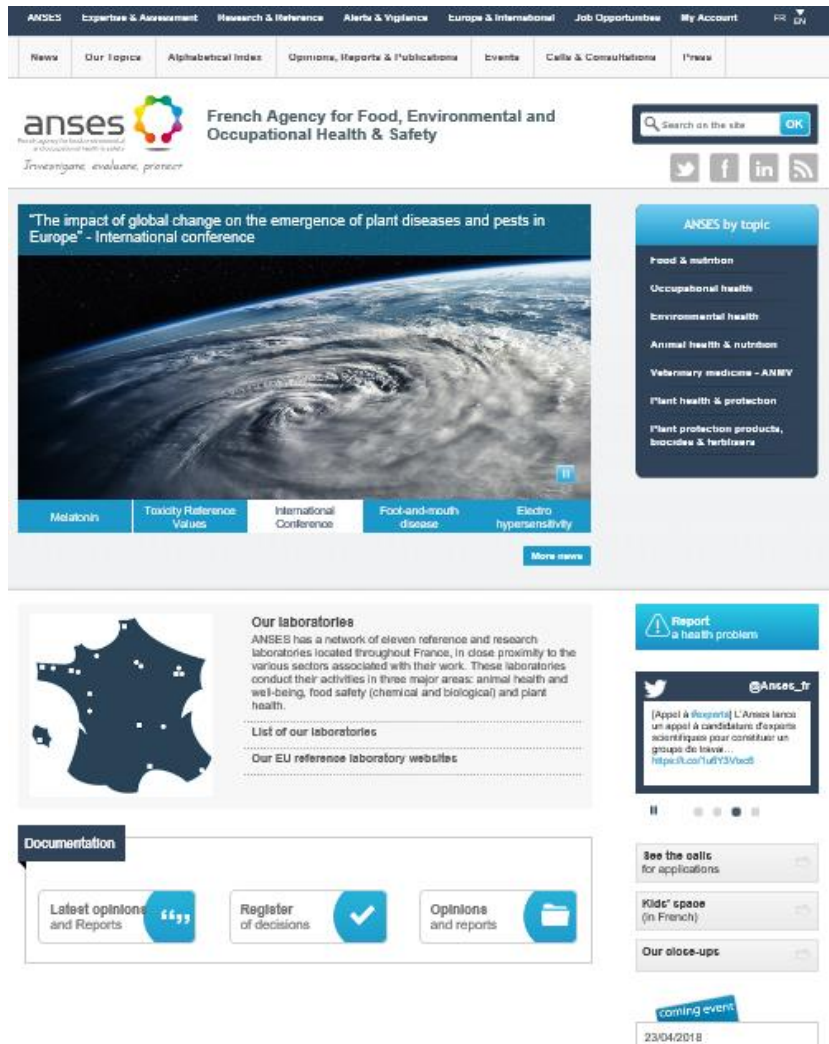
NACIONALINIS MAISTO IR VETERINARIJOS
RIZIKOS VERTINIMO INSTITUTAS



- Networks



Thank you for your attention



For more information

www.anses.fr

Register for our

[newsletter](#)



Twitter:
[@Anses_fr](https://twitter.com/Anses_fr)



Over 8800 followers!